

THIS COPY IS PROVIDED ON A RESTRICTED BASIS AND IS NOT TO BE USED IN ANY WAY DETRIMENTAL TO THE INTERESTS OF PANDUIT CORP.

PART NUMBER	COPPER CONDUCTOR SIZE RANGE	CURRENT RATING (AMPS)	BOLT HOLE SIZE	HEX SIZE	DIMENSIONS IN INCHES					
					A	W	G	C	T	F
CB25-18-CY	#14-#10	25	1/8	---	1.00	.32	.19	.28	.07	.28
CB35-36-CY	#14-#6	50	3/16	---	1.19	.38	.23	.25	.07	.41
CBA70-14-CY	#14-#4	70	1/4	---	1.31	.50	.25	.28	.08	.40
CB70-14-CY	#12-#2	90	1/4	---	1.55	.50	.25	.34	.09	.52
CB125-14-QY	#2-#1/0	125	1/4	---	1.97	.63	.50	.28	.13	.64
CB175-38-QY	#4-#3/0	175	3/8	5/16	2.19	.75	.44	.50	.16	.75
CB225-56-QY	#6-#4/0	225	5/16	5/8	2.38	1.00	.47	.56	.13	.91
CB300-38-QY	#1-#350	300	3/8	3/4	3.16	1.00	.50	.94	.19	1.37
CB400-38-3Y	#1/0-500	400	3/8	3/4	4.25	1.50	.88	1.00	.19	1.37
CB650-12-3Y	600-1000	650	1/2	1-1/8	4.63	2.00	1.16	.87	.25	1.97



LISTED
509D



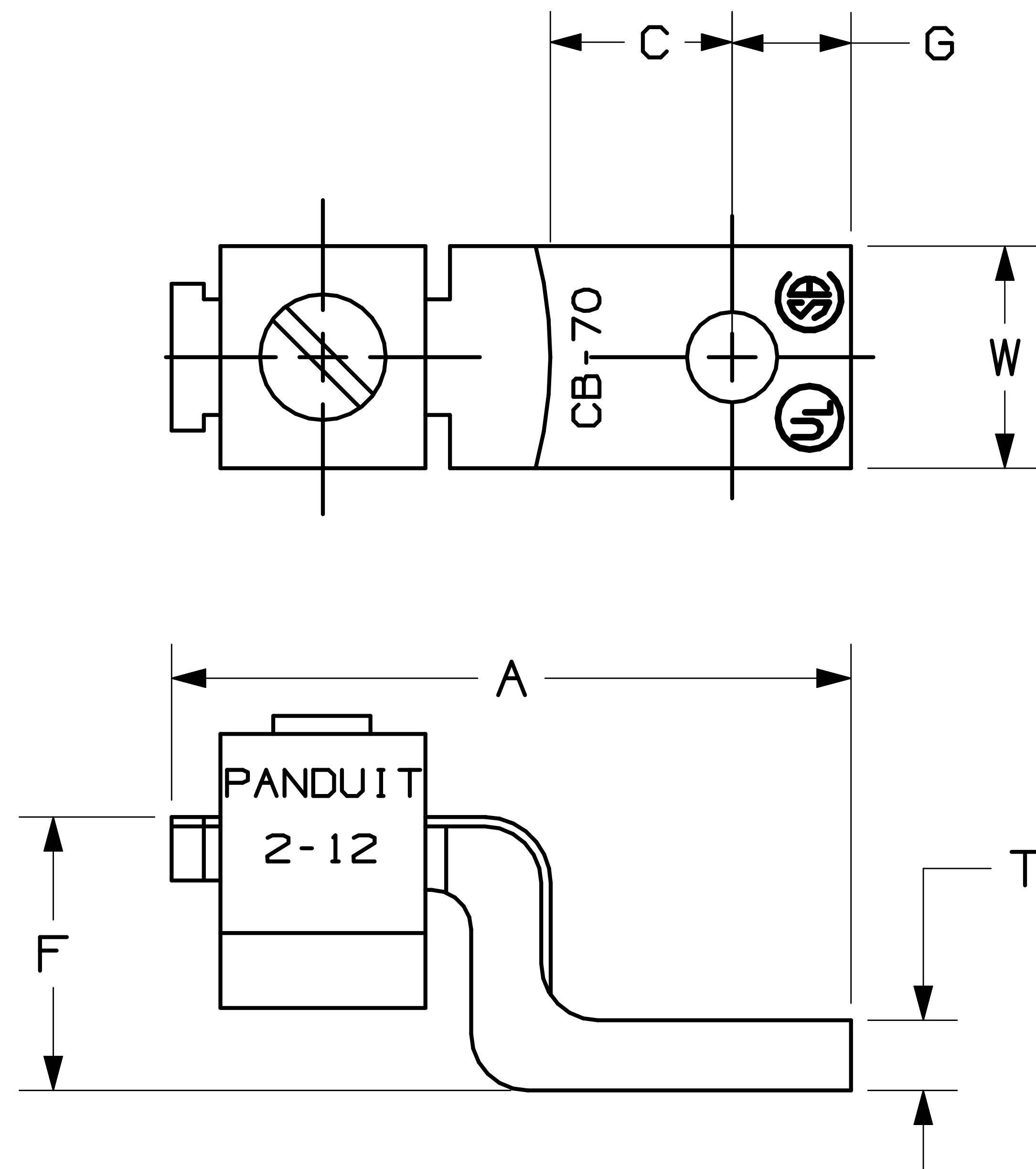
CERTIFIED
70732

NOTES:

- UL AND CSA LOGOS APPEAR ON ALL PARTS AS SHOWN.
- "P" PANDUIT LOGO APPEARS ON PART NO. CB25-18-C ONLY. ALL OTHER PARTS EXCLUDING CB25-18-C, STAMPED "PANDUIT".
- FLAT HEAD SET SCREW IS USED IF HEX SIZE IS NOT GIVEN.
- FOR USE WITH COPPER WIRE ONLY.
- MATERIAL: COPPER
- ADDITIONAL MULTIPLE WIRE COMBINATIONS FOR CB35-36-C ARE:

A. TWO-#10'S	D. ONE-#10 WITH ONE-#12
B. TWO-#12'S	E. ONE-#12 WITH ONE-#14
C. TWO-#14'S	
- ADDITIONAL MULTIPLE WIRE COMBINATIONS FOR CB70-14-Q ARE:

A. ONE-#8 WITH ONE-#4
B. ONE-#8 WITH ONE-#6
- THESE PARTS ARE ROHS COMPLIANT.



CAD FILENAME/LAYERS C41663_00

PANDUIT CORP. TINLEY PARK, ILLINOIS

"CB" SERIES MECHANICAL LUGS
CUSTOMER DRAWING

UNLESS OTHERWISE SPECIFIED,
DIMENSIONAL TOLERANCES ARE:
(.X) ± (.XXX) ±
(.XX) ± ANGLES ±

UNLESS OTHERWISE SPECIFIED,
ALL DIMENSIONS ARE GIVEN
IN INCHES, THIRD ANGLE PROJECTION.

DRAWN BY JHNU

MAT'L:

SCALE NONE

DATE 3/06

COPPER

DRAWING NO.

C41663

DWG
A
SIZE

REV	DATE	BY	CHK	DESCRIPTION	ECN	CUST	PM
00	3/06	JHNU	LEM	DRAWING RELEASED - ROHS COMPLIANT	PC00348		